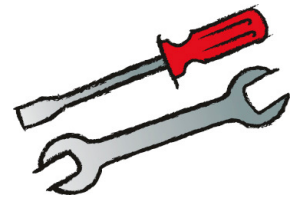




Das Original

TSI 15/10

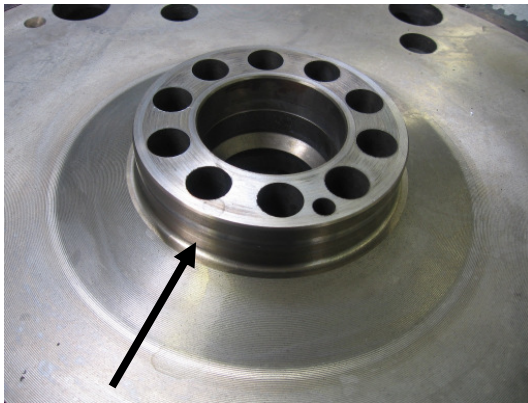


Replacement of the crankshaft oil seal on the transmission side

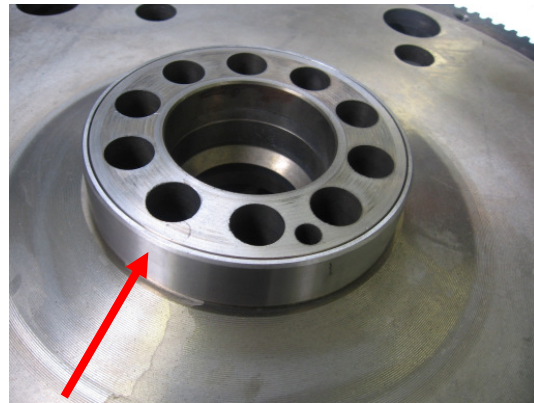
Mercedes-Benz

OM 447 LA | 457 LA | 460 LA

OM 501 LA | 502 LA



Flywheel without race



Flywheel with race

Standard features:

Please note the following before installing the flywheel! An oil seal with an inner diameter of 115 mm forms a seal directly on the flywheel. A race *must not* be used here.

To be taken into consideration for engine repairs: Please note the following before installing the flywheel!

An oil seal with an inner diameter of 120 mm must only be used in combination with a race. Otherwise, an increased oil loss is the consequence.



354.090

025 997 50 47

115x140x12 ASW LD PTFE/ACM



834.289

403 032 03 09

115x120x21 FE PR

562.920

013 997 14 47

120x140x13 AW/BS LD FPM

766.828

120x140x13 AW/BS LD PTFE/ACM